

# 2021 May - Journal

Saturday, May 15, 2021

## Cliff Camp Journal Sheet

2021 — 1

**Names:** Who was in your party? Steve Kliewer

**Dates:** What days were you here? May 19-26, 2021

### Comments:

This was another great trip to Cliff Camp. Bill did a great job closing the cabin and many heavy projects around camp. The new enhanced barbecue is a wonder to behold.

Temperatures were very pleasant in the 70's except for two days of snow and freezing temperatures. It may have been cold but the brief White Christmas was fabulous.



This was a difficult trip with water problems and many supplies and materials to bring up.

I plan to return for a more relaxing trip - June 16-30.

No mosquitos nor yellow jackets. Enjoy.

### First Day:

#### Road conditions:

The road was clear and open. I will never take that for granted after finding a locked gate at Dinkey bridge.

Wishon Village was still closed, probably because of ongoing road work at the store.

#### Trail condition:

The trail was frequently blocked by small to medium limbs. However, near the outhouse, two more fallen snags have added to the log jam. There are another dozen snags in that area that are ready to fall. The outhouse could easily be smashed again. One of the two huge fir snags (5 feet in dia) near the outhouse fell this winter. Luckily not damaging anything this time. The other seems to be leaning toward the outhouse.

#### Fall Creek:

Very slow but still trickling.

#### Water Supply:

The tank was empty. It took three days to fix parts and find several blockages and leaks in order to restore flow to the cabin. No water had been stockpiled in the cabin and I had to fetch it from the spring.

The spring is now flowing into the tank at a rate of 2 gal/min. This is still a substantial flow rate and will fill the 420 gal tank in about 3 hours. In recent Springs it has been flowing at up to 6 gal/min.)  
I would estimate that the spring will still be at least trickling through July. However, August and later may be in trouble.

Water is crucial. This is a severe drought year. We need to make our supply more secure. The tank has been very useful but is still not alone sufficient in light of breaks and leaks. Even while the spring is running, it may take days to restore water flow (as it did this time). I suggest maintaining a backup water supply in the cabin.

The small rock cairn in front of the cabin hides two valves. One of these valves diverts water to the trees south of the cabin. It was left on and appears to have been on for a long time. This could easily drain the tank faster than the spring can keep up using up to 2500 gallons in a day. For comparison, the garden drip system uses only 2 gallons per day.

#### **Garden:**

Because of the drought and the failure of the water system, the garden is a complete loss. Even the sequoia tree was dealt a fatal blow. Only the blackberry and a lone onion seems to have survived. I have replanted a few vegetables and reduced the area being watered. The total usage by the drip system is now only about 2 gallons per day.

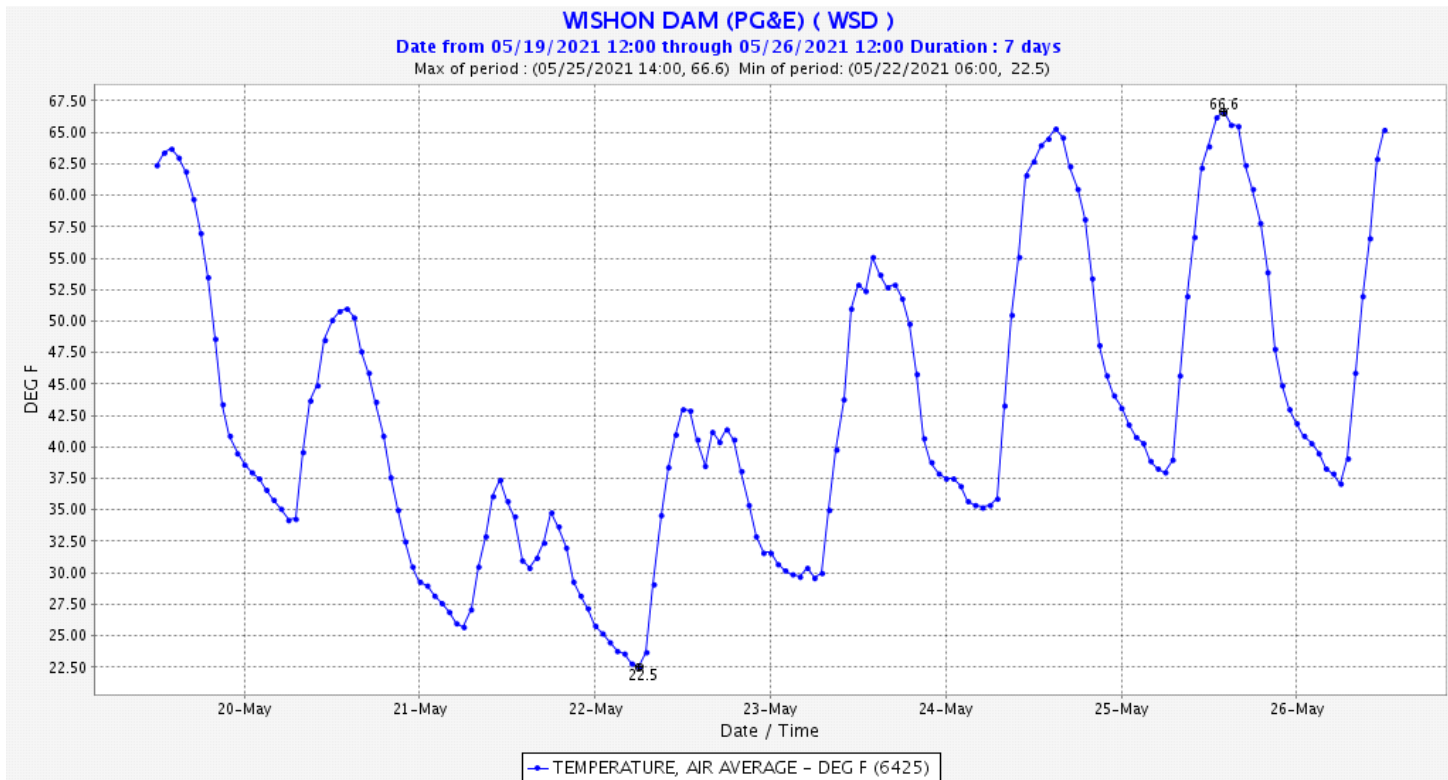
#### **Astronomy:**

The sky was brightly lit by the Moon - it went from first quarter to full.  
Venus, Mercury, and Mars were brilliant just after sunset.

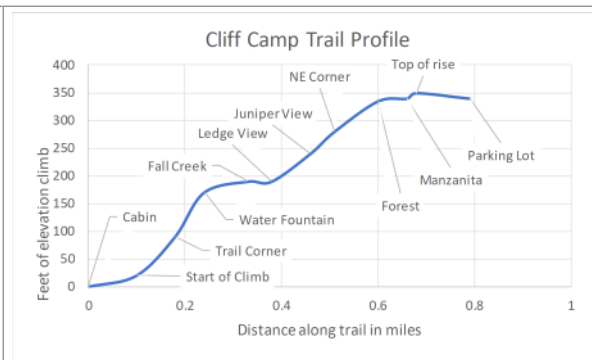
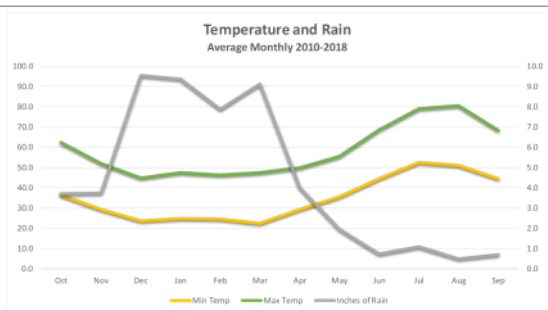
#### **Weather Report:**

The weather was great - sunny, blue skies every day - but hot. All heavy work was completed by 10 am. Light work in the afternoon or just rest.

May	DOW	Desc	Overnight Low	High
19	Wed	Clear & bright blue	-	62
20	Thur	Scattered clouds	34	50
21	Fri	Snow by 1 pm 2" by 6 pm	25	37
22	Sat	Snow and rain	22	43
23	Sun	Cloudy	30	52
24	Mon	Sunny	35	63
25	Tue	Sunny	38	67
26	Wed	Sunny	37	-



[http://cdec.water.ca.gov/dynamicapp/staMeta?station\\_id=WSD](http://cdec.water.ca.gov/dynamicapp/staMeta?station_id=WSD)



### Accumulated Precipitation since Oct 1, 2019 = 12.6"

The Annual Rain Year is defined as  
 Oct 1 through Sept 31.

Wishon Reservoir:

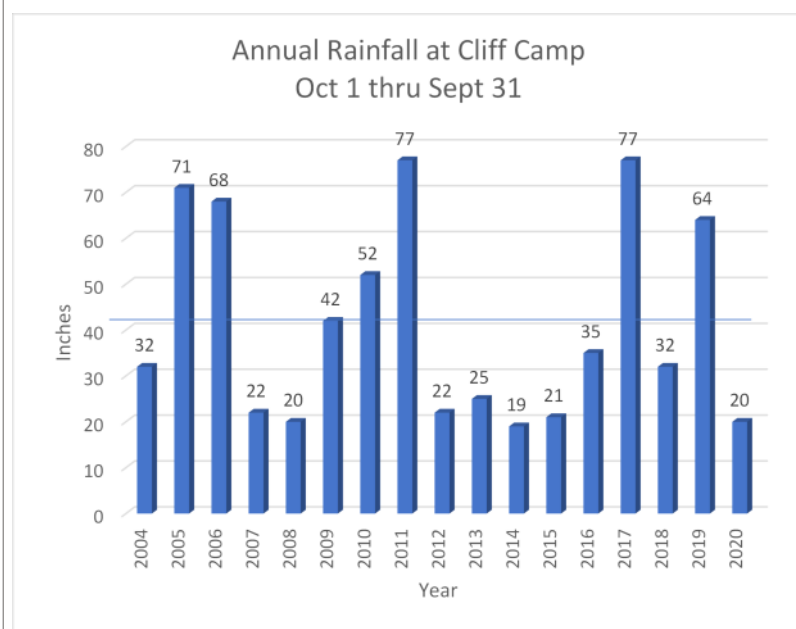
**Storage = 57500 acre-feet = 34%**  
 (max = 128,300 af)

**Water elevation = 6465 ft = 66%**

Reservoir min = 6290 ft, max = 6555 ft  
 Range = 265 ft

**= 75ft below spillway**

Spillway min: 6540 ft



--	--	--	--

# 2021 June- Journal

Tuesday, June 29, 2021

## Cliff Camp Journal Sheet

2021 — 2

**Names:** Who was in your party? Steve Kliewer, Jerry Smith

**Dates:** What days were you here? June 21-28, 2021

### Comments:

Cliff Camp is a marvelous treasure year-round. My favorite season is springtime, a time of renewal - refreshingly cool, colorful flowers, and the chance of rain or even snow. The temperatures are generally cool but not cold. However I have had the joy of snow at the cabin about 5 times and each time it was beautiful and awe-inspiring. Summer is a bit too hot and dry. In the fall, cool temperatures return and the forest seems to relax into a quiet time preparing for the winter. Even the winter has wonders for those sturdy enough to make it in.

We went fishing on Little Rancheria and the river near the bridge. Water flows are low but still good. The fish are rather, small, picky and difficult however. We had fun but didn't catch much.

No mosquitoes nor wasps at all for the first 5 days. We finally had to install the screen doors on day 6 with the arrival of such pests.

Fresh bear scat and tracks were found in several locations around the area.

Temperatures continued to rise after a week to low 90's. Best to reserve the early morning for any heavy labor or hiking. Ice would only last one day. This became so limiting that we left a day early.

I have attached an inventory of common supplies in the cabin to help the next group to use the cabin. I know I would love to have a heads up for my planning purposes and have assumed that others would too.

The fire and drought inspired me to try my hand at poetry. I hope you enjoy *Perseverance*.



Collinsia



Leopard Lily

### First Day:

Road conditions:

It is heartbreaking to drive through the devastation rent by the Creek Fire from Cressman's to Shaver.

Some road work and fire cleanup continues but mostly clear and easy driving.

Trail condition:

Good. The trail is lined with colorful blooms: Collinsia, Farewell-to-Spring, Gentian, Penstemon, Queen Anne's Lace, Golden Brodiaea, Larkspur, Mariposa Lily, Columbine, Leopard Lily, Lupine, Star Tulip, Thimbleberry, Currant,

Hazelnut, Ceanothus, and Willow. Not to mention a myriad of tiny white, yellow, and blue flowers.  
Fall Creek:  
Bone dry.

#### **Water Supply:**

The good news is that there is water at the cabin. The bad news is that the tank never fills and the flow rate into the tank is down to 3/4 gal/min. There must be a substantial leak in the pipe that I have been unable to locate. In the addendum, I provide more detail. Given the continuing droughts, securing our water supply is critical and I hope that younger more agile folks will undertake this task.

In case of emergency, there are 8 gals of water stored in the cabin.

This year is an extreme drought. Despite the brief snow I got on May 19, the pitifully small 13" of annual rainfall Cliff Camp received this winter is the lowest since my records began in 2000 (see chart below). Temperatures are also record breaking for this time of year.

#### **Garden:**

Tomatoes, potatoes, and onions have survived. I will try for more next year if our water supply can be secured.

#### **Astronomy:**

First day of Summer was June 21 - The longest day of the year.

The Moon was huge and full on June 24. Despite that, Many stars decorated the evening sky.

Venus was radiant at -3 magnitude. It was brilliant almost immediately after the sun set. Mars was nearby - however much fainter at +3 magnitude.

None of the brighter satellites (e.g. ISS, Hubble, or Starlink) were visible.

#### **Dead Trees and Snags:**

Each year more tree's are dying and falling. Only a few years ago, I was wondering if we were going to have enough firewood from fallen trees. Now, most trails and routes are blocked and often obliterated by jumbles of fallen snags.

Our first afternoon, while sitting outside the cabin, I heard a loud crack and looked up to see the top third of a 100 ft tall snag break off and topple to the ground. It was just beyond the outhouse.

At least a dozen snags are likely to fall on or near the trail in the near future.

A huge snag (5 ft in diameter, 140 ft tall) is leaning 3 deg directly toward the outhouse. It's twin fell this winter but luckily did no damage. It is likely that the remaining one will soon fall and take the outhouse with it. I recommend relocating the outhouse this summer.

Near the cabin, a tree (still live, 4 ft in diameter and 115 ft tall) is leaning 6 deg toward the SE corner of the cabin. While this is not likely to be an immediate hazard, it deserves some attention.

#### **Cabin Flooring**

The floor has become spongy near the front door as well as both the SE and SW corners. We investigated the floor near the front door and found severe dry rot leaving no support for the 1/2" plywood flooring. We repaired this as best we could. See Floor Addendum for more details.

#### **Spring Opening:**

Opening Cliff Camp in the Spring for all to enjoy is always a time of uncertainty. No one has been in for at least 8 months, winter damage and the state of crucial supplies are uncertain. In recent years, just getting to the cabin and making it livable has often become very difficult. Closing in the Fall has many well -defined chores but is not as uncertain as opening. Last Fall Bill Easley was willing and able to close Cliff Camp for the winter when I was stymied by the Creek Fire cleanup. He did a great job.

My dilemma is that opening the cabin is getting to be more than I am able to accomplish alone. Yet, no one seems to enjoy or be able to go up in late May. Is there anyone else who would be willing to take on Spring Opening.

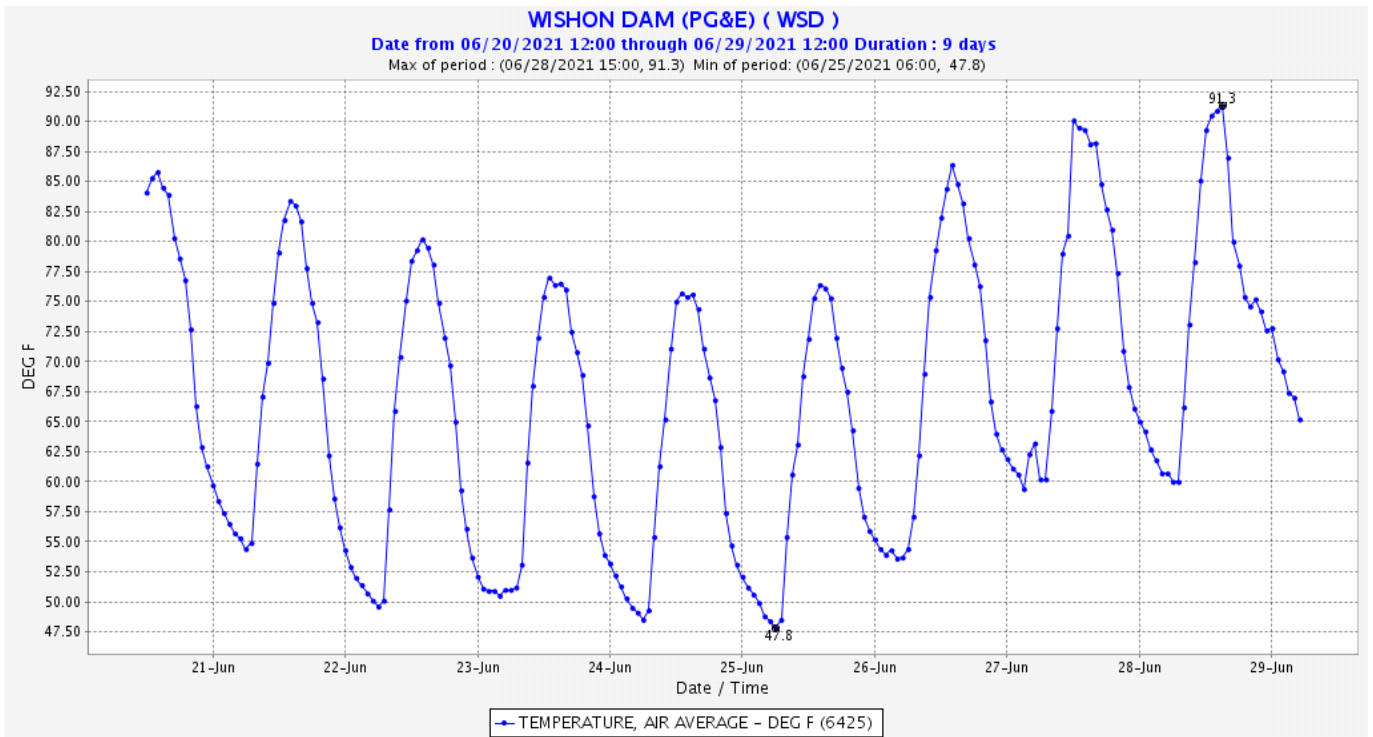
#### **Weather Report:**

Sunny, blue skies every day. Too hot.

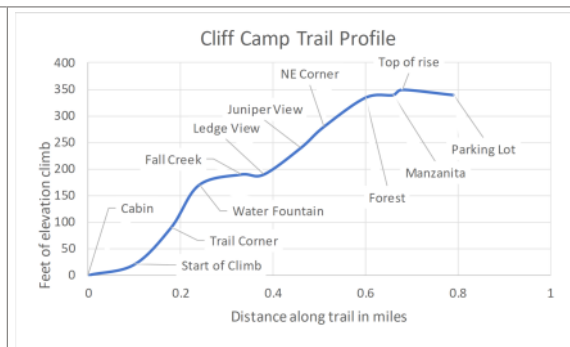
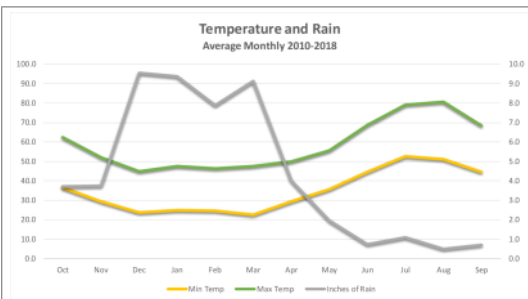
June	DOW	Desc	Overnight Low	High



21	Mon	Sunny	-	83
22	Tue	Sunny	50	80
23	Wed	Sunny	50	84
24	Thu	Sunny	50	76
25	Fri	Sunny	50	76
26	Sat	Sunny	60	87
27	Sun	Sunny	62	91
28	Mon	Sunny	62	-
29	Tue	Sunny	-	-



[http://cdec.water.ca.gov/dynamicapp/staMeta?station\\_id=WSD](http://cdec.water.ca.gov/dynamicapp/staMeta?station_id=WSD)



### Accumulated Precipitation

since Jul 1, 2020 = 12.6"

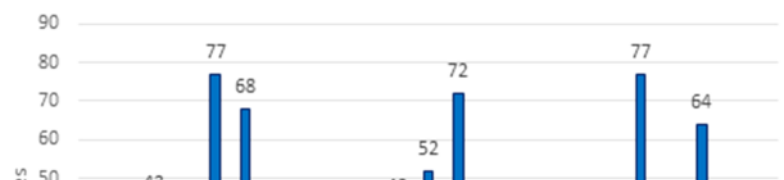
The last precip was 0.5" on May 21

The Annual Rain Year is now defined as July 1 through June 30.

Wishon Reservoir:

**Storage = 61300 acre-feet = 48%**  
 (max = 128,300 af)

### Annual Rainfall at Cliff Camp From July 1 of previous year



### Water elevation = 6473ft = 69%

Reservoir min = 6290 ft, max = 6555 ft

Range = 265 ft

= 67ft below spillway

Spillway min: 6540 ft



### Water Addendum:

#### Observations:

- Tank is always empty. All of the water that flows in is going down the pipe.
- When I left on May 30, the tank was full and the flow into the tank was 16 s/qt = 1 gal/min = 7 hr/tank.
- Water currently flows into tank at rate of 20 s/qt = 0.75 gal/min = 9 hr/tank
- Water flows in the sink initially at full rate of 2 gal/min. After 11 min and 60 gal it slows to 0.6 gal. min. After about an hour the full flow is restored.
- The 3/4" polyethylene pipe stores ~0.1 gal per foot.
- The total length of pipe from tank to cabin is estimated to be 1100 ft = 110 gal of stored water).
- I have walked the entire length of the pipe and have found no obvious leaks or wet spots.
- I flagged the location of the pipe between the drinking fountain and the steepest section. However, between there and the cabin, I have been unable to locate the pipe.
- The garden drip system uses only 2 gal/day. This is not the cause of these problems. Even if the spring flow was completely dry it would take at least 200 days to drain the tank.
- The spring is overflowing its dam slowly. In other words, the spring is producing slightly more water flow than is appearing at the tank - partial blockage.

#### Likely causes:

- A leak of at least 1 gal/min has occurred somewhere between 500 and 700 feet from the cabin. I would estimate that it lies somewhere along the steepest section of pipe since this section is under the greatest stress.
- A blockage in the line from the spring to the tank is also throttling the flow into the tank.
- There are at least 3 fittings at the outlet of the spring that appear to be unnecessary and may be limiting the flow to the tank. Can they be removed?

#### Suggestions:

- a. Search for leak.
  - i. If necessary, pull up pipe but be sure to re-bury to prevent animal bites and warmer water.
  - ii. Separate at couplings (or cut pipe if necessary) to locate region of leak.
- b. Repair and replace pipe
  - i. Bring several hundred feet of 3/4" polyethylene pipe for replacement.
  - ii. A dozen Blu-Lock couplings and a removal tool are in the shed.
  - iii. Replace any portion of pipe that is damaged or already has several couplings weakening it.
  - iv. Make sure that all couplings are securely connected (i.e. a full inch of pipe inserted).
  - v. Use a minimum number of couplings as they may plug and need to be opened again. Flag all couplings so they can be found when needed.
  - vi. On hillsides, make sure that pipe is secured from creeping downhill and stretching over rocks, bushes, & logs. Cover wherever possible.
- c. Check all couplings in pipe from spring to tank to find partial blockage.

#### Estimates:

The Army on bivouac estimates a water budget of 1 gal per man per day. Given the times I have been forced to use stored water, I can confirm that with conservation this budget can easily be sufficient. This would include drinking, cooking, and cleaning. The shower tank with 25 gallons can yield at least 5 showers and in a pinch twice that.

Given a large group that might lavishly consume up to 40 gals of water per day. The spring could still easily meet that need even if it was only dripping at a rate of 0.03 gal/min or taking 500 seconds to fill a quart. Currently the spring is running very slowly at 20 seconds per quart.

Even if the spring were completely dry but the tank was full, this group of people could continue to use the stored



water for at least 2 weeks.

However, any leaks severely limit this rosy picture. It is imperative, in these times of increasing drought, to find and fix any leaks.

Floor Addendum:

The floor at the door was very spongy. The SE and SW corners likewise.

Based on observations after removing the floor panel nearest front door:

Floor is 1/2" x 4ft x 8ft plywood.

It is nailed down using 1" tacks which are now working loose.

Underlayment is 1/2" x 2ft x 8ft plywood

It is supported by 4x4 floor joists (some may only be 2x4) spaced about 4 ft and running crosswise.

These in turn are supported on concrete ribs in the ground spaced about 6 feet and running the length of the cabin.

The flooring is missing in the SE and SW corners.

The underlayment and joists in this area were severely dry rotted.